

# Building Generationally Intelligent Communities for Low Income Earners

Christine Morka

&

Simon Biggs

# Clifton Hill: experimental ageing

- 'Know-how for life'
- 'Intergenerational sustainability'
- 'Socially valued lifestyle'
- 'Community transformation'
- 'Preventative intelligence'

# News from Gerontology

- 'Older people tend to spend more time at home and in the immediate outdoor environment than do younger people' Oswald et al (2005)
- may feel an even greater sense of being trapped or disadvantaged by urban decay, and that this may limit their ability to maintain a sense of self-identity' Scharf et al (2005)
- Without adequate intergenerational ties this can evolve into an experience of being pushed out or left behind in a hostile environment (Biggs & Tinker, 2007)

# London Pilot: Age Friendly Environments

- Think beyond families
- Local environments & short distances
- Shared interests between generations
- Lifecourse: stability and change
- The absence of 'neighbourhood' and the need for community spaces



# Brotherhood of St Laurence

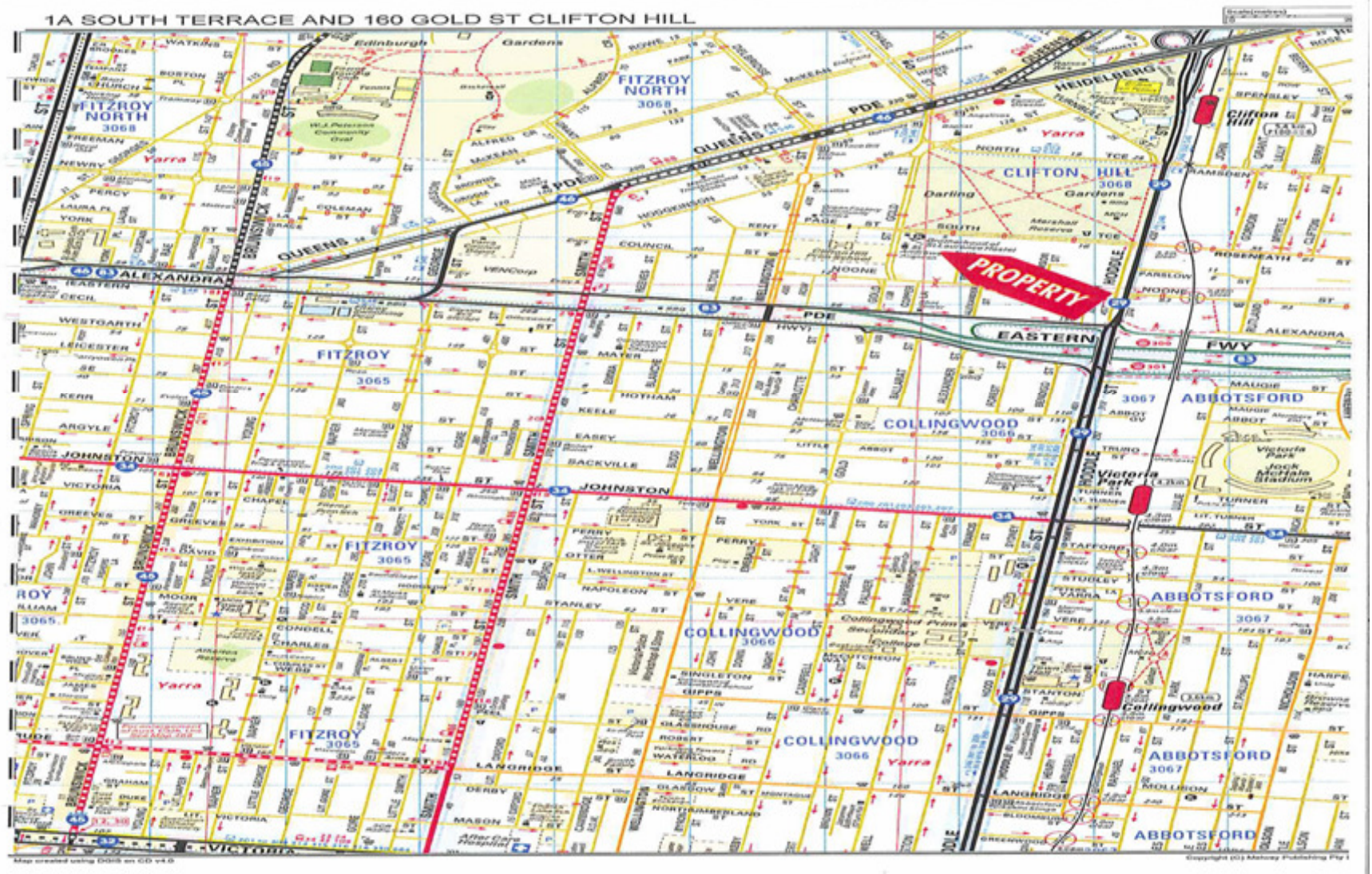
**Working for an Australia free of poverty**

# BSL's Working Definition for Inclusion

- 'A social inclusion approach involves the building of personal capacities and material resources, in order to fulfil one's potential for economic and social participation, and thereby a life of common dignity.'

(Smyth, 2007)





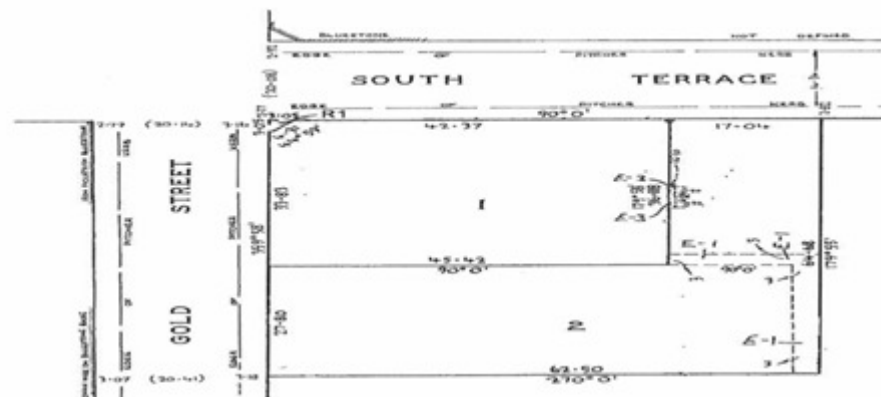
Biggs & Morka 2010 Brotherhood of St  
Lawrence

LP113253  
 EDITION 1  
 APPROVED 10/11/74

<p>113253</p> <p>PLAN OF SUBDIVISION SECTION 12                  CROWN ALLOTMENTS 1 &amp; 20                  AT CLIFTON HILL                  CITY OF COLLINGWOOD                  PARISH OF JIKA JIKA                  COUNTY OF BOURKE</p> <p>SCALE OF METRES 0 10 20</p>	<p>APPROPRIATIONS</p> <p>WAY &amp; DRAINAGE ----- BROWN                  DRAINAGE &amp; SEWERAGE ----- BLUE                  SUPPORT ----- PURPLE</p>	<p>ENCUMBRANCES &amp; OTHER NOTATIONS</p> <p>EFCEN</p>
--	---	--



COLOUR CONVERSION  
 E-1 = BLUE  
 R-1 = BROWN  
 E-3 = PURPLE



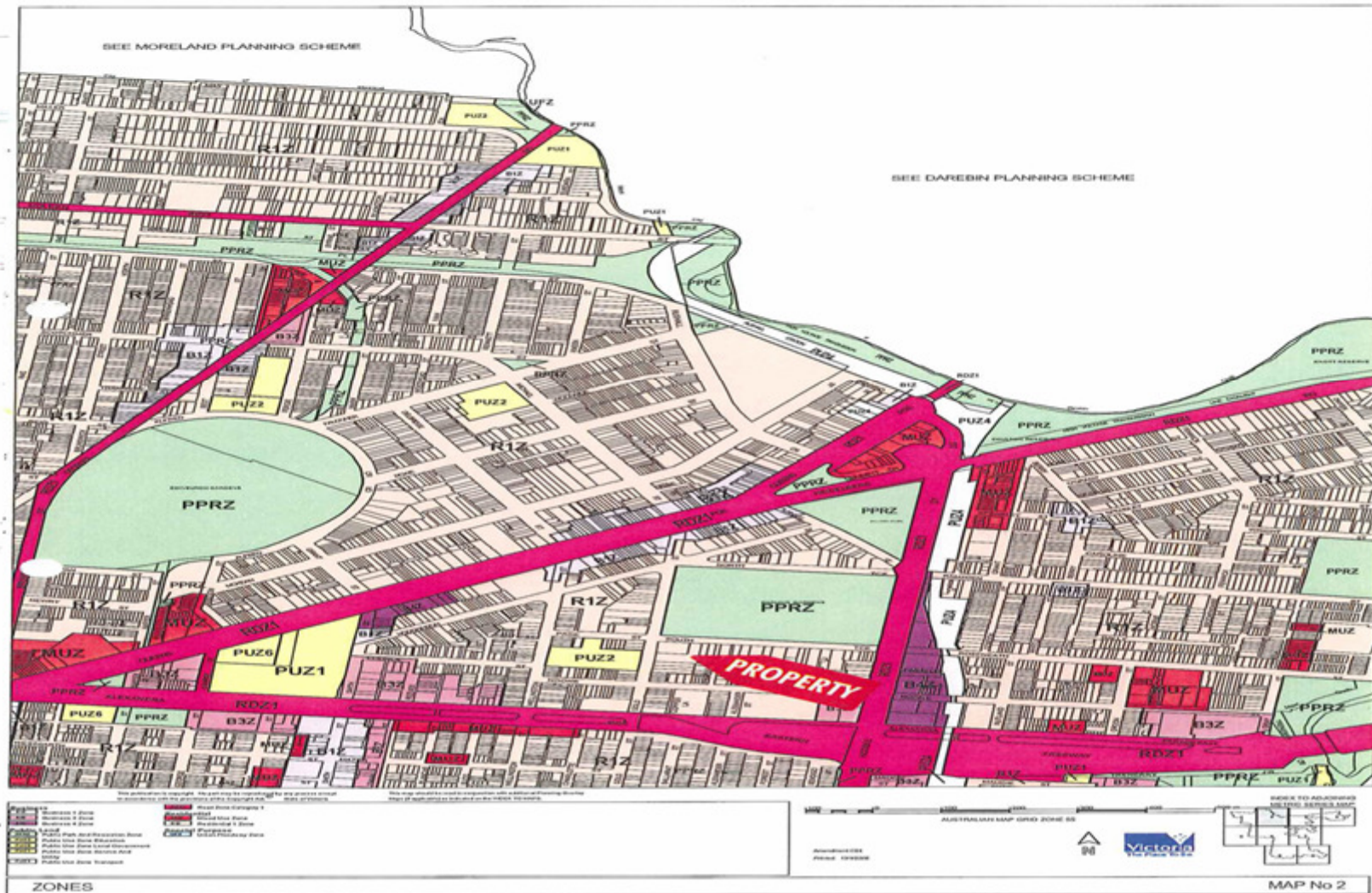
WARNING: THE IMAGE OF THIS DOCUMENT OF THE REGISTER HAS BEEN DIGITALLY AMENDED.  
 NO FURTHER AMENDMENTS ARE TO BE MADE TO THE ORIGINAL DOCUMENT OF THE REGISTER.

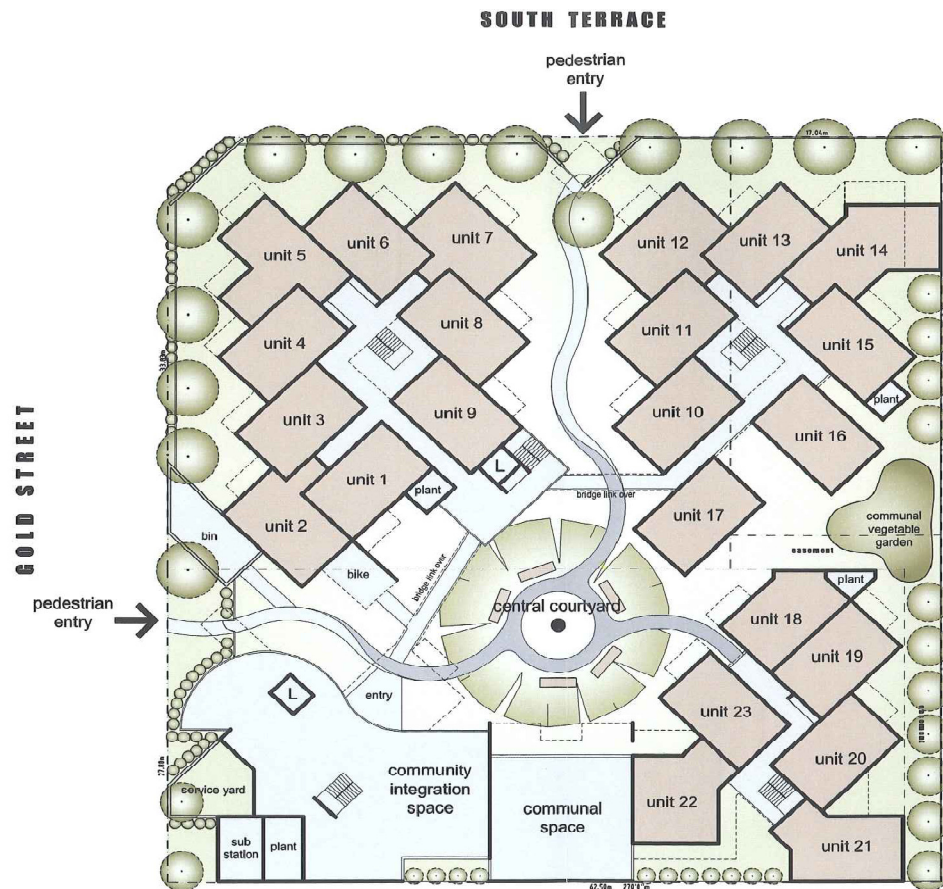
FOR APPROPRIATIONS, ETC.  
 SEE BACK HEREOF

Biggs & Morka 2010 Brotherhood of St  
 Lawrence



# YARRA PLANNING SCHEME - LOCAL PROVISION

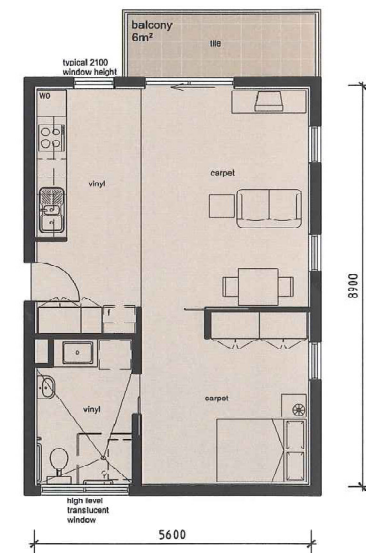




**Conceptual Site & Ground Floor Plan**

Biggs & Morka 2010 Brotherhood of St  
Lawrence

DEVELOPMENT SUMMARY	
	1-Bedroom Apartment
Ground Floor	23
First Floor	27
Second Floor	25
Total	78
Total Site Area	4132m <sup>2</sup>



**Typical 1-bedroom unit**  
floor area - 50sqm

# Clifton Hill Target Group

- Low income isolated older adults
- Vulnerable to social fragmentation and exclusion
- Can't afford to 'buy into' retirement communities
- Need flexible work-life opportunities
- 'Know-how for life'

# Generating Clifton Hill

- What does it mean to live a 'good long life'?
- Need a space for experiment and for taking risks (two words not commonly associated with old age)
- What do sustainable intergenerational relations look like ?
- How are these things reflected in the built environment?

# New Hope for Old Age

Biggs & Morka 2010 Brotherhood of St  
Lawrence

Biggs & Morka 2010 Brotherhood of St  
Lawrence





Biggs & Morka 2010 Brotherhood of St  
Lawrence



Biggs & Morka 2010 Brotherhood of St  
Lawrence